

KIDS FURNITURE

2 0 2 2



ENGINEERED TO ENDURE®

NORIX

Kids Furniture Series

Does your furniture often fall prey to snotty noses, shoe-scuffs, dirty hands, sticky fingers, spilled milk, constant hitting, aggressive kicking, and even those kids who will try to use your products as an artist canvas or their own personal trampoline?

We understand, and we've got you covered. That's because for more than 35 years, Norix Furniture has designed and engineered durable, secure and aesthetically pleasing products for facilities that house people of a variety of ages. Now, we are happy to present a fun line of furniture that is produced specifically for schools, daycares, waiting rooms and other areas in facilities that receive constant-use from children, a demographic which is as gentle with furniture as they are with their dirty little sneakers.



Durability & Cleanability

All products in our Kids Furniture Series have been rigorously tested to ensure their durability and safety. Specifically, products in this line are FDA approved and GREENGUARD Gold Certified. All products also surpass industry-standard dynamic and static weight load testing, making them safe and secure for kids of any size.

These products are made with rounded edges and no moving parts, giving you peace of mind that you have chosen safe products for your right space. Food stains? No problem. Crayon drawings of stick figures with large heads? No worries. The occasional exploding diaper? Yes, that too. Just do a little scrubbing as directed and our furniture will look like new... year after year.





TESTING & CERTIFICATIONS

FDA Approved and GREENGUARD Gold Certified for low chemical emissions to UL 2818. UL.COM/GG.

COLOR CONSISTENCY

Premium TruColor™ material is fully compounded for superior color consistency and durability.

EXTREMELY DURABLE

Made of rotationally molded, high-impact polyethylene for maximum durability.

DESIGNED FOR SAFETY

Rounded edges throughout product provide safeguard against injury. Designed with no holes or moving parts.

CLEANABILITY

Smooth surface is easy to clean and sanitize with common cleaning solutions when used as directed.

A-Maze

A-Maze is a kids furniture product from Norix® that is a one-seat wonder due to the endless configurations that can be created with this fun kids series. Its four plush colors, secure construction and playful shape make this perfect for daycares, lobbies, dayrooms, play areas and any other place in your facility where children may gather.

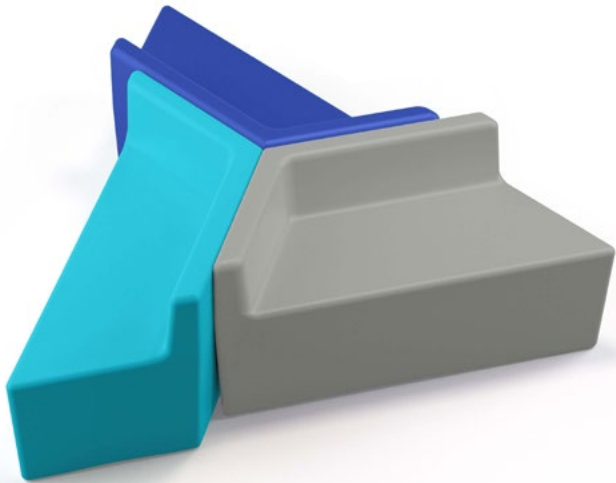
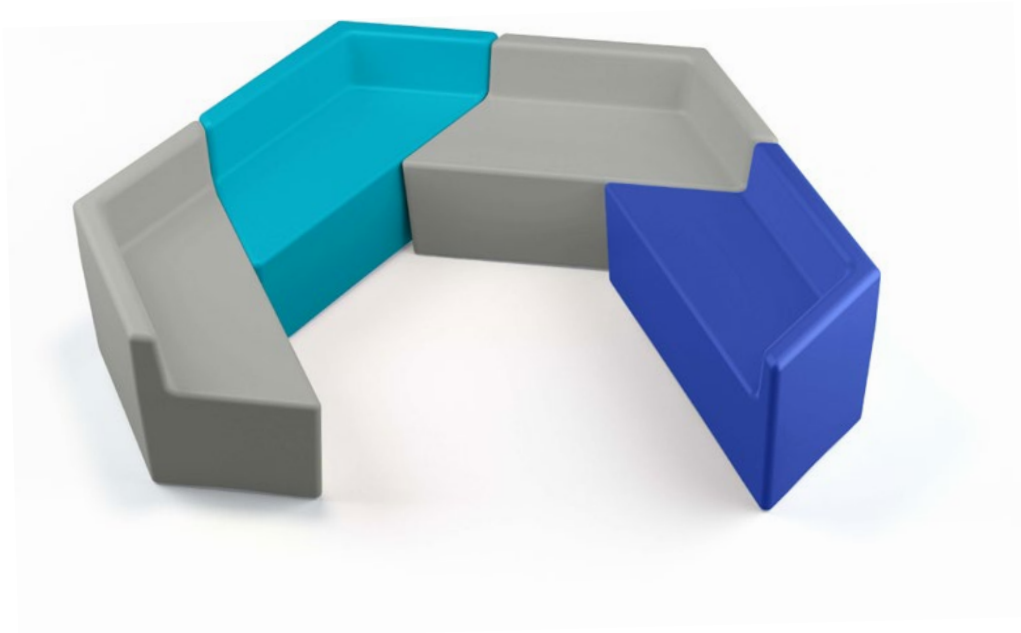
This light-weight product can be moved and re-configured as needed and is applicable to high-traffic and constant-use areas.



Due to differences in monitors, printers and materials, actual product colors may vary. Color chips are available for more accurate depiction of color.

Innovative Construction

Aside from being aesthetically pleasing and highly configurable, the construction and design of A-Maze make this a safe and secure product that is suitable for use by children. In particular, A-Maze is made of rotationally molded, high-impact polyethylene for maximum durability. It's also designed with no holes or moving parts, and features rounded edges for safety and security. You can rest assured that this kid-appropriate product also will provide a long-term furniture solution for your facility and look good along the way.



A-Maze

Model #AM10

Dimensions:

Overall: 43"L x 17.5"W x 22"H

Seat Height: 14.3"H

Weight: 22 lbs



A-MAZE SERIES



TESTING & CERTIFICATIONS

FDA Approved and GREENGUARD Gold Certified for low chemical emissions to UL 2818. UL.COM/GG.

COLOR CONSISTENCY

Premium TruColor™ material is fully compounded for superior color consistency and durability.

EXTREMELY DURABLE

Made of rotationally molded, high-impact polyethylene for maximum durability.

CLEANABILITY

Smooth surface is easy to clean and sanitize with common cleaning solutions when used as directed.

DESIGNED FOR SAFETY

Rounded edges throughout product provide safeguard against injury.

ELEPHANT MOTIF

Cute elephant motif surrounds kids with friends.

Elle Series

The Elle Series Chair and Table is a fairy-tale take on kids furniture for daycares, schools and other institutional facilities like a Behavioral Health or Corrections visitation area that might be intimidating to children. We designed this series to be a safe product for use by children that can serve as a fun distraction in potentially stressful environments.

Both Elle products are available in four plush colors and are highly durable, making them perfect for high traffic areas in facilities where children gather.



Cobalt



Malibu



Habanero



Grey Velvet

Due to differences in monitors, printers and materials, actual product colors may vary. Color chips are available for more accurate depiction of color.

Elle Chair

The heart of the series is the Elle Chair, which was designed to look like a playful abstraction of an elephant with a cute trunk, wiggly tale and floppy ears. A child-appropriate back rest provides secure seating for the little ones using this product.



Elle Chair

Model #EL11

Dimensions:

Overall: 15.1"D x 22.4"W x 19.5"H

Seat Height: 13"H

Weight: 7 lbs



Elle Table

The Elle Table features a Safari scene on its front and three docking stations on its backside that can house three Elle Chairs. Additionally, two tables can be pushed and ganged together, providing a larger surface and six docks for Elle chairs. It also can be placed against a wall to save space. Either way, it creates a perfect little majestic jungle wonder world!



Elle Table

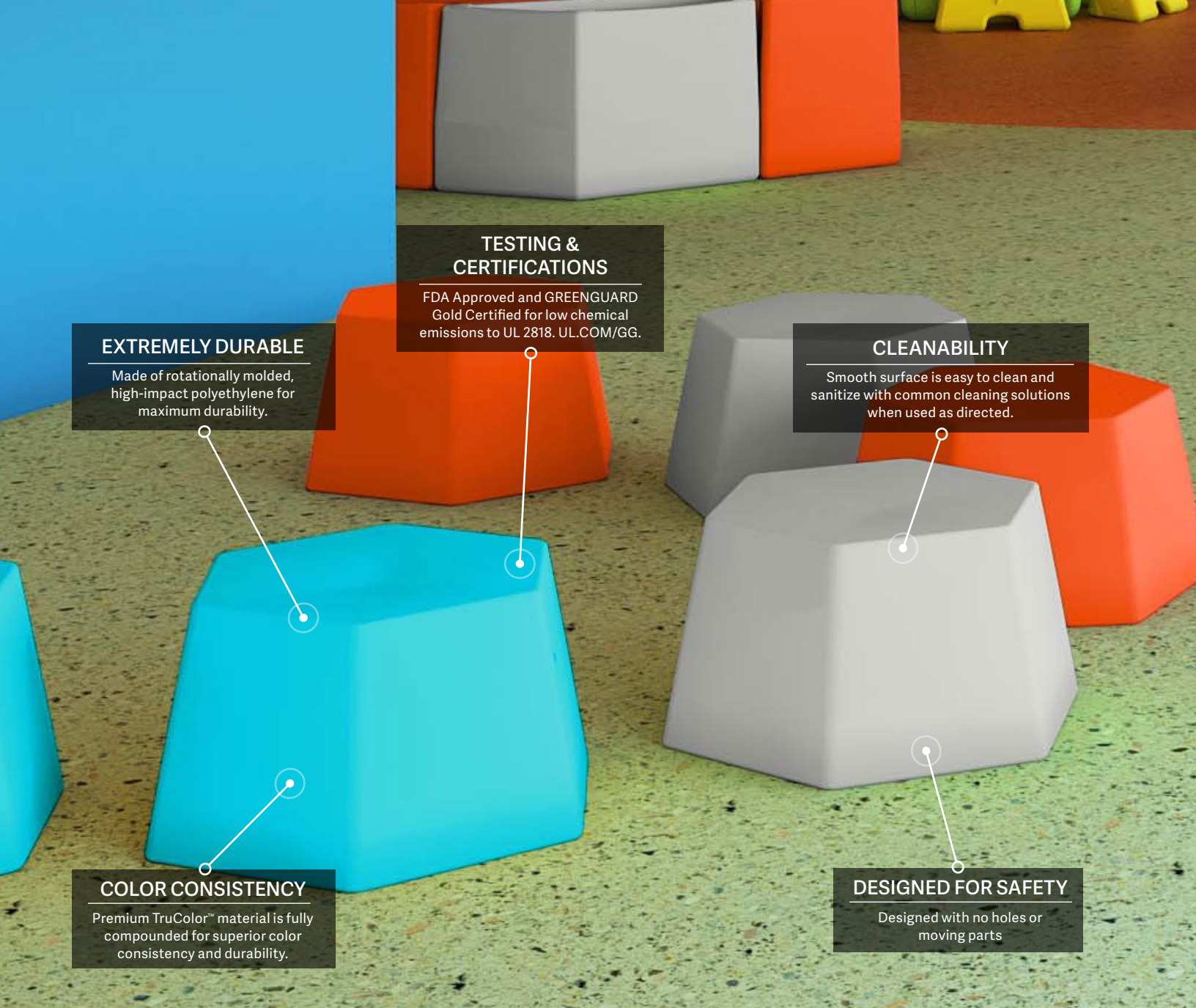
Model #EL52

Dimensions:

Overall: 55.2"L x 26"W x 22.4"H

Weight: 39 lbs





EXTREMELY DURABLE

Made of rotationally molded, high-impact polyethylene for maximum durability.

TESTING & CERTIFICATIONS

FDA Approved and GREENGUARD Gold Certified for low chemical emissions to UL 2818. UL.COM/GG.

CLEANABILITY

Smooth surface is easy to clean and sanitize with common cleaning solutions when used as directed.

COLOR CONSISTENCY

Premium TruColor™ material is fully compounded for superior color consistency and durability.

DESIGNED FOR SAFETY

Designed with no holes or moving parts

Hex-It

Oh, Hex! No, we aren't commanding you to put a spell on it. The name Hex-It actually is derived from the hexagonal shape of this kids seating and table series from Norix®.

This multi-function marvel allows you to flip the product on one side and use it as a stool. Flip it on its other side and you have a table. It's an ideal kids seating solution with a fun shape that's ready to be configured to your space. Hex-It is adaptable, which could serve today's socially distanced classrooms well and it is easy to clean and sanitize for greater infection control.



Cobalt



Malibu



Habanero

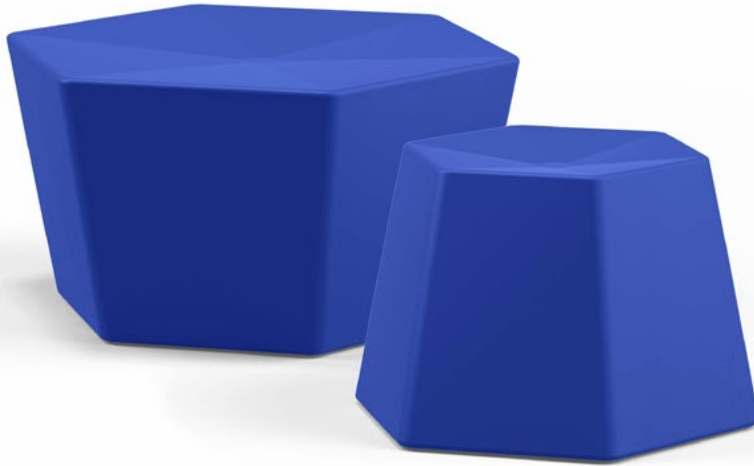


Grey Velvet

Due to differences in monitors, printers and materials, actual product colors may vary. Color chips are available for more accurate depiction of color.

Move It Around

Hex-It™ can be picked up re-arranged for different uses. In the morning, a group of these products can be used as stools just for sitting. Later in the day, pick one up, flip it over and surround it with stools, and you have the perfect table to play games on or have a snack. Perfect for where kids gather.



Hex-It Small

Model #HX16-SM

Dimensions:

Overall: 20.5"L x 18"W x 13"H

Weight: 7.5 lbs

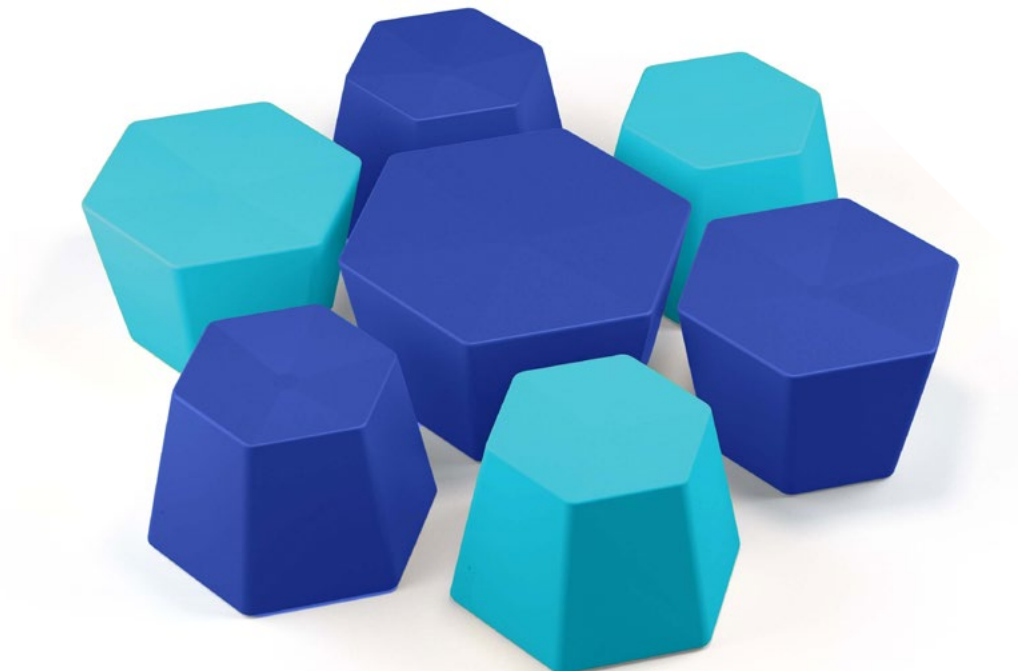
Hex-It Large

Model #HX16-LG

Dimensions:

Overall: 26"L x 22.5"W x 13"H

Weight: 11 lbs



HEX-IT
SERIES

AT NORIX, WE DESIGN INNOVATIVE, ROBUST FURNITURE THAT MEETS THE REAL-WORLD NEED FOR HUMANIZING CHALLENGING ENVIRONMENTS.



Individual attributes vary by product. See specification sheet for details.



NORIX

One Innovation Drive, West Chicago, Illinois 60185
Phone: 630-231-1331 | Toll Free: 800-234-4900 | Fax: 630-231-4343
3/22 | furniture@norix.com ©2022 Norix Group, Inc.

NORIX.COM